

Sensitive Compartmented Information Facilities Planning, Design, and Construction (SCIF-PDC) Training
Seminar Registration Information

Course title: Sensitive Compartmented Information Facilities Planning, Design, and Construction (SCIF-PDC)
There is no Seminar/Course Number
This is not a Corps of Engineers PROSPECT Class

Dates: Tuesday, 22 July – Friday, 25 July 2025
Class will run 0800-1700 (last day of class usually ends by 1200)

Location: Edward Zorinsky Federal Building. 1616 Capitol Avenue, Omaha, Nebraska 68102.
Classroom number will be provided in final confirmation email.

Tuition: \$2,000.00 per student

Payment deadline: Tuesday, 1 July 2025

- **DO NOT SEND PAYMENT WITH THE APPLICATION.** Attendees are placed in the course "first come/first serve" based on the received date of their completed application form. If an attendee is deploying, please notify the course registrar. Deploying attendees will be placed on the roster, pending payment. Incomplete, illegible forms, using the wrong application form, or submitting application to another email may result in registration delay. Previous versions of the application form will not be accepted. Application forms must be submitted for each attendee. Multiple names on one application will not be accepted. The application will be processed based on the date received.
- DoD/Federal Contractors are welcome to register for the course. The attendee(s) must be working on a current DoD/Federal contract. The contract must be verified via an email sent by a DoD/Federal customer. A form is available to send to the DoD/Federal customer. Please contact the course registrar. Attendees will not be registered until the contract is verified.
- Accepted forms of payment: Credit Card, MIPR/Government Order, DoD/Federal Government "convenience" Check, Cashier's Check, or Money Order.

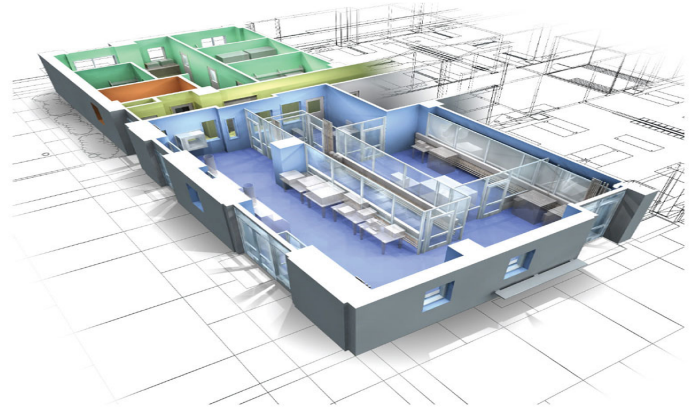
****PLEASE NOTE: NON-USACE APPLICANTS, PAYING WITH A MIPR, MUST HAVE AN INTER-AGENCY AGREEMENT (DD-1144 or 7600A) IN-PLACE WITH USACE-OMAHA.**

- It is the attendee's responsibility to ensure payment information is provided to their correct financial personnel, as well as to follow up on payment. We are not a training facility. Once payment has been received, the attendee will receive a confirmation email.
- This course is exportable in a Mobile Training Team (MTT) format. Contact Ann Mittelsdorf, Course Coordinator, at 402-995-2930 or email ann.m.mittelsdorf@usace.army.mil for more information or for a cost estimate to bring the course directly to your facility.

Sensitive Compartmented Information Facilities Planning, Design, and Construction (SCIF PDC) Training

COURSE DESCRIPTION

The Protective Design Mandatory Center of Expertise (PD-MCX) conducts this course on Sensitive Compartmented Information Facilities Planning, Design, and Construction (SCIF PDC). The course presents in detail the elements of a successful SCIF project from the planning stage through the design and construction phases. Current SCIF criteria is covered along with supporting criteria. The goal is to ensure that the SCIF project is planned, documented, designed and constructed properly for performance and mission requirements.



COURSE CONTENT

- Definitions
- Criteria
- Assets
- Physical threats
- Technical threats
- Project planning process
- Project costing
- Documentation and accreditation
- Layout design
- Design for physical security
- Design for acoustic mitigation
- Design for photonic mitigation
- Design for TEMPEST mitigation
- Red/Black design for data communications
- Electrical technical power design
- OCONUS vs. CONUS
- Construction security plan

WHO SHOULD ATTEND

The Sensitive Compartmented Information Facilities Planning, Design, and Construction course is intended for an interdisciplinary group; including project managers, engineers, designers, and architects. This course is intended for all applicable parties who are involved in new or retrofit SCIF projects. Personnel from installation level, major command level, and Corps of Engineers district and division levels are encouraged to attend. Representatives from other federal government agencies may also attend. Under certain circumstances, representatives from A/E firms may also attend.

LOCATION AND REGISTRATION

The Sensitive Compartmented Information Facilities Planning, Design, and Construction course will be conducted at various locations worldwide. Contact the Class Registrar for the class schedule and locations at:

Phone: (402) 995-2393

email: PDC.Training@usace.army.mil

This course can be conducted at the sponsor's location. The sponsor is responsible for all expenses, student registration, and providing the training facility. Contact the Training Program Manager at:

Phone: (402) 995-2930

email: PDC.Training@usace.army.mil

web page: <https://www.nwo.usace.army.mil/pdc/home/>



**U.S. Army
Corps of Engineers
Protective Design Center**

This flier is approved for public release; distribution is unlimited.