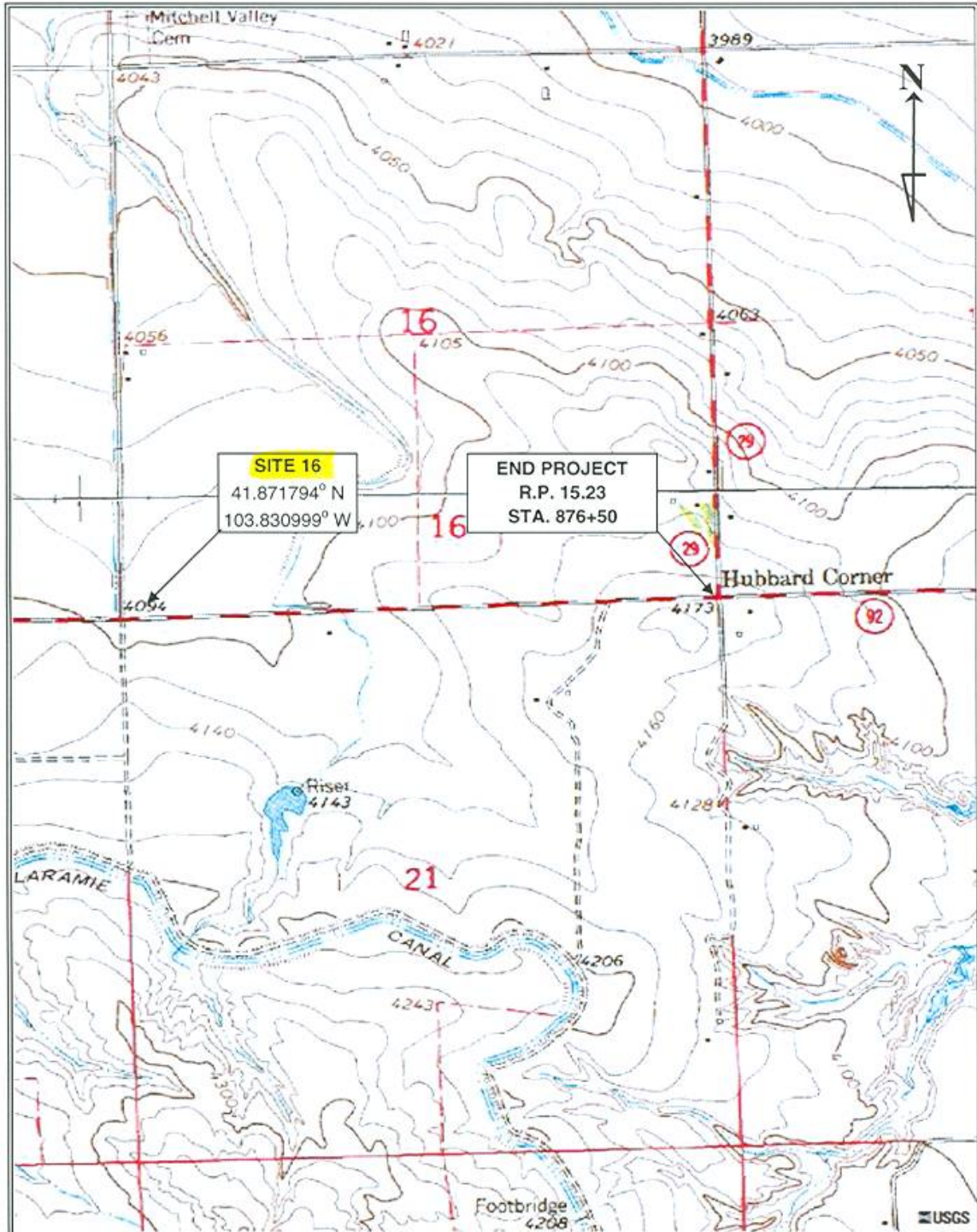


SCOTTSBLUFF WEST
SEC 17, 20, T. 22 N., R 56 W.
Scotts Bluff Co., NE

FIGURE 2.8
Site Location
Microsoft TerraSever.co.



SITE 16
 41.871794° N
 103.830999° W

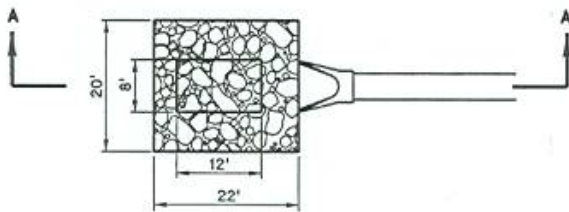
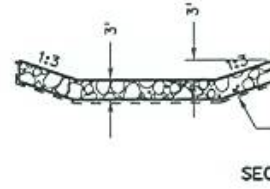
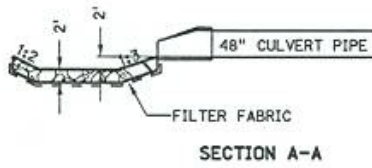
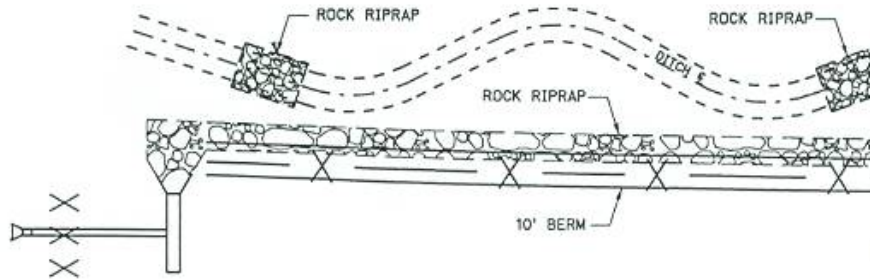
END PROJECT
 R.P. 15.23
 STA. 876+50



SCOTTSBLUFF WEST
 SEC 16, 21, T. 22 N., R 56 W.
 Scotts Bluff Co., NE

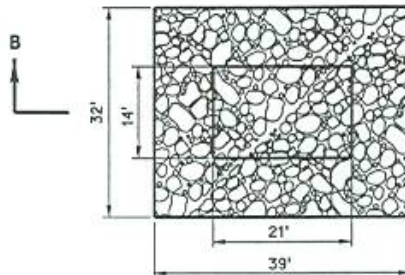
FIGURE 2.9
 Site Location
 Microsoft TerraSever.co.

GENERAL



DETAILS OF ROCK RIPRAP, TYPE "A"

STA. 408+12 LT.



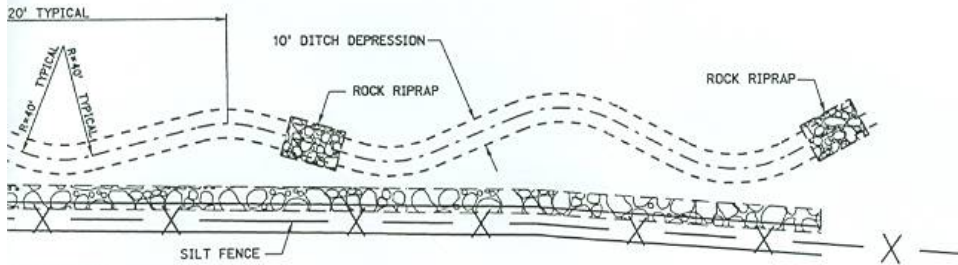
DETAILS OF ROCK RIPRAP

STA. 408+12 LT.

INFORMATION

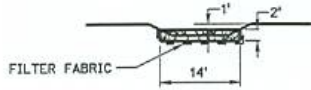
PRELIMINARY PLAN
NOT FINAL - SUBJECT TO CHANGE

PROJECT NO.	SHEET NO.
92-1(1018)	2-44
C.N. 51004	

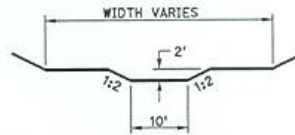


I DETAILS

530+16 LT.

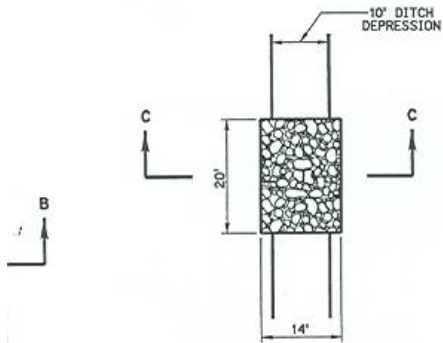


SECTION C-C

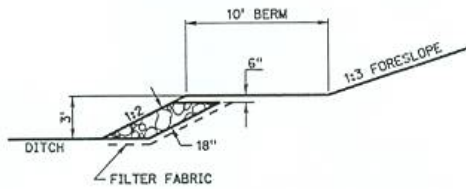


TYPICAL DITCH DEPRESSION

STA. 524+13 TO STA. 530+16 LT.



DETAILS OF ROCK RIPRAP, TYPE "A"



DETAILS OF ROCK RIPRAP, TYPE "A"

STA. 524+25 TO STA. 530+00 LT.

'A"

STA.	SIDE
524+62	LT.
526+40	LT.
528+20	LT.
530+05	LT.